

# The **Gasman** Advantage

## Receiver Valve Non-Back seating (Angle Valve)



### Application

**Gasman** Angle valves are Compatible with all CFC, HCFC and HFC Refrigerants and oils and other Industrial fluids non-corrosive to steel and brass. (With suitable Gland / Seal).

### Construction

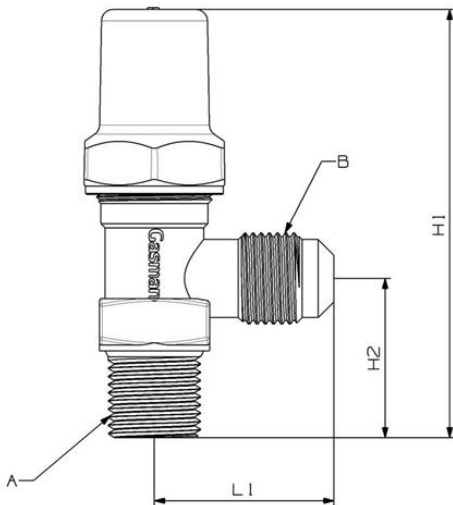
- Valve Body: Hot Forged Brass (BS-218).
- Spindle: Stainless Steel.
- Gland Nut: Extruded Brass.
- Gland Packing: Neoprene/Asbestos Free Gasket.
- Seal Cap: Thermally Stable Engineered Plastic.

### Design

- Full port openings for maximum flow.

### Operation & Testing.

- Maximum working pressure 400 psig.
- Working Temperature Range: (-30°C + 100°C).
- Individual pneumatic Testing in Open/Close position at 400 psig.

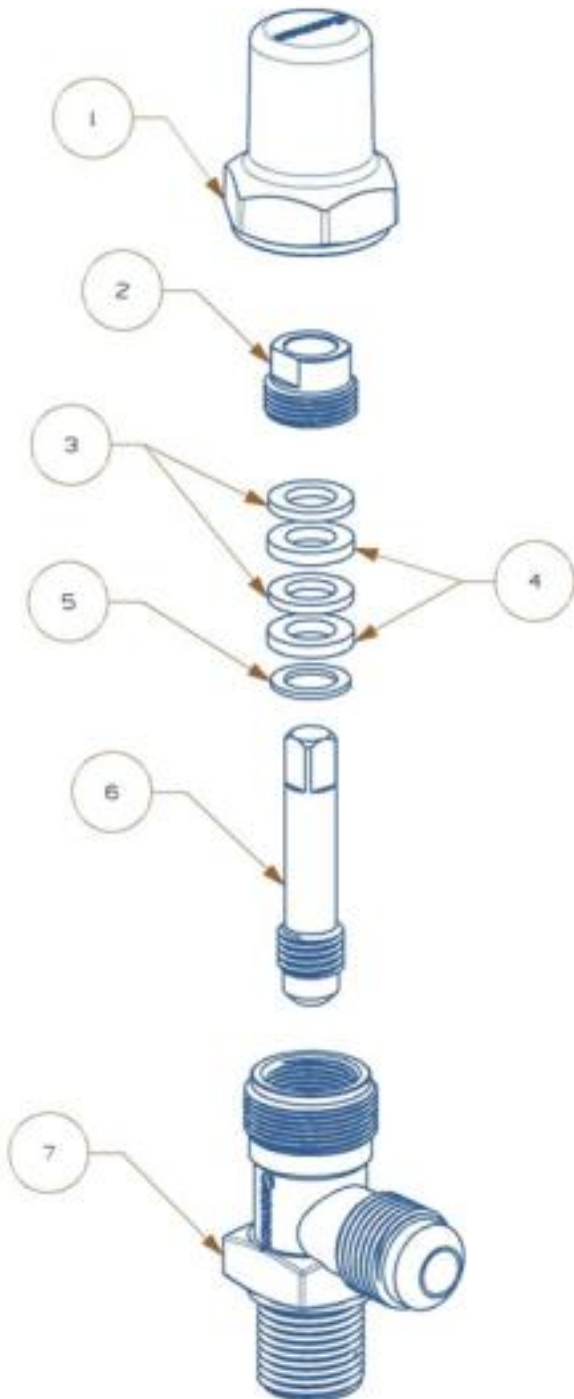


Part No.	NPT A (in)	Flare B(in)	L1 (mm)	H1 (mm)	H2 (mm)	WT (gm)
RV-06	1/4	1/4	27	66	27.5	85
RV-10	3/8	3/8	31	73.5	40.5	125
RV-10-6	3/8	1/4	31	73.5	40.5	*
Part No.	Flare A (in)	Flare B(in)	L1 (mm)	H1 (mm)	H2 (mm)	WT (gm)
RV-06F	1/4	1/4	27	66	27.5	*
RV-10F	3/8	3/8	31	73.5	40.5	*

\*Pending

# The Gasman Advantage

## Receiver Valve / Angle Valve (Non- Back seating) (1/4" - 3/8")



Material Specification		
No	Part	Material
1	Cap	ABS Plastic
2	Gland Nut	Brass
3	Gland Packing	Neoprene
4	Gland Packing	Asbestos Free Gasket
5	Washer	Brass
6	Spindle	Stainless Steel
7	Body	Forged Brass (BS-218)

nan

# The **Gasman** Advantage

Non Binding Document

# Gasman